



# Your selected kitchen

---

## Galley: Mid tone

---

With its narrow layout and overhead and parallel benchtops, the Galley kitchen makes the most of a small place, putting every inch to good use. Clean white walls teamed with cement-look benchtops open up the space, whilst timber-look cabinets draw the eye upwards making the space feel larger.

Use this guide as a starting point to bring your kitchen to life.



### Design tips

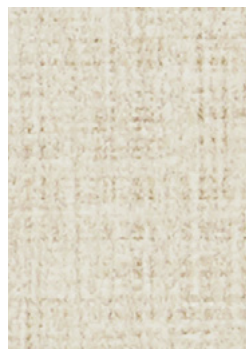
Form a base for these cement and oak look finishes teaming them with exposed brick. Enhance the closed-off kitchen wall with open shelving crafted in matching Tassie Oak for displaying kitchenware or decor. Finish the space with Bliss Shitake cabinetry interiors and wooden or cork flooring that taps into the oak look whilst creating effortless flow throughout.



Benchtop  
**White Cement**



Cabinetry  
**Tassie Oak**



Cabinetry Interior  
**Bliss Shitake**

### Swatches

Natural tones and raw textures combine for an airy feel and contemporary edge.

Order your free swatches at [formica.com.au](https://formica.com.au)