

# Laminex® ColourTech Doors & Panels

## Order Form

ASW Sales Order No:  
(Laminex use only)

Branch: \_\_\_\_\_

Customer: \_\_\_\_\_

Delivery Address: \_\_\_\_\_

Suburb: \_\_\_\_\_ State: \_\_\_\_\_ P/Code: \_\_\_\_\_

Contact Name: \_\_\_\_\_

Phone: \_\_\_\_\_

Fax: \_\_\_\_\_

If this order is for re-make panels (tick):   
(previous order number must be supplied to ensure new panels match existing job)

Customer Order/Reference Number: \_\_\_\_\_

Order #: \_\_\_\_\_ Of:

If addition to previous order (tick): \_\_\_\_\_

Date Ordered:        /        /

Laminex Customer Service Centre	
Phone: 132 136	Fax: 1300 661 100

A new form must be completed for each different profile and colour (all doors and panels are 18mm thick).

Door Profile \_\_\_\_\_

Outer Edge Profile \_\_\_\_\_

Colour \_\_\_\_\_

Finish \_\_\_\_\_

Please note: outer edge profile will be applied to entire order, unless otherwise specified.

I have read and accept the Terms & Conditions of Supply

### Doors & Drawers

	Qty	Height (mm)	Width (mm)	Square Edge Override				Drawer Group No.	Drawer Set or Bank (S or B)	Double Sided	Hinge Hole Drilling	FingerPull location				Classic Panel Override
				L	R	T	B					L	R	T	B	
1									S B							
2									S B							
3									S B							
4									S B							
5									S B							
6									S B							
7									S B							
8									S B							
9									S B							
10									S B							
11									S B							
12									S B							
13									S B							
14									S B							
15									S B							
16									S B							
17									S B							
18									S B							
19									S B							
20									S B							

**Doors & Drawers**

	Qty	Height (mm)	Width (mm)	Square Edge Override				Drawer Group No.	Drawer Set or Bank (S or B)	Double Sided	Hinge Hole Drilling	FingerPull location				Classic Panel Override
				L	R	T	B					L	R	T	B	
21									S B							
22									S B							
23									S B							
24									S B							
25									S B							
26									S B							
27									S B							
28									S B							
29									S B							
30									S B							
31									S B							
32									S B							
33									S B							
34									S B							
35									S B							
36									S B							
37									S B							
38									S B							
39									S B							
40									S B							
41									S B							
42									S B							
43									S B							
44									S B							
45									S B							

X Edging between Drawer Set

Square edge (default)

Match to outer edge profile

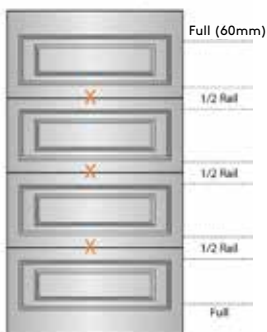
**Hinge Hole Drillings:**

Select hinge hole type and drilling specification. Hinge Type: \_\_\_\_\_

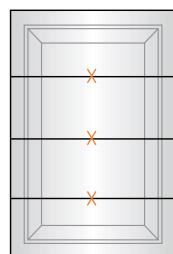
Other, specify the distance from top and bottom (to hole centre): \_\_\_\_\_

\*If Hinge drilling is required, please select the edge and number of hinge holes for each line, including clarification on Standard (STD) hinge option. Specify hinge distance in the Details field on each line, or provide details in the Distance field above. Only available for Hettich and Blum hinge types. Longer lead times will apply. Please contact Customer Service to confirm availability.

Drawer Set Example (Figure 1)



Drawer Bank Example (Figure 2)

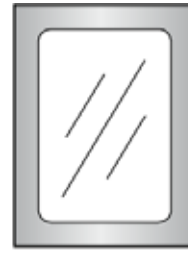


Note: Dimension constraints for selected profiles. Where x appears, if not specified, Between-Drawer-Edging will be supplied as Square edge.

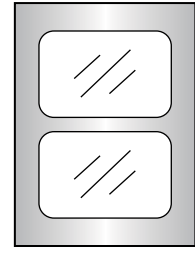
Refer to 'Easy Reference guide' for comprehensive details on how to order drawers.

## Glazed Frames

	Qty	Height (mm)	Width (mm)	Square Edge Override				No. of Panes
				L	R	T	B	
1								
2								
3								
4								
5								
6								
7								
8								
9								
10								
11								
12								



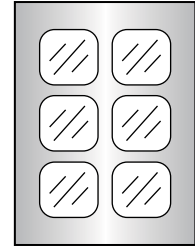
Single Pane



2 Pane Horizontal



4 Pane

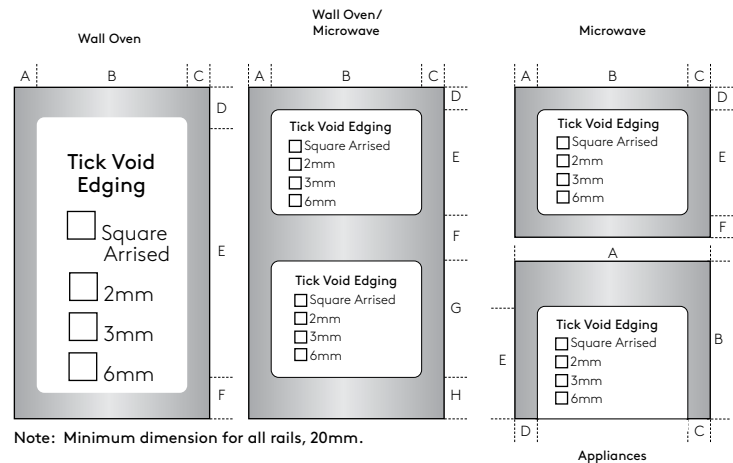


6 Pane

Note: External edges for all glazed frames are manufactured as per edge profile selected on page 1. Internal edges will match the default frame associated with the profile chosen on page 1. Minimum dimensions for all glazed frames are 60mm. Glass Panel for Glazed Frames is not included.

## Appliance Frames

	Wall Oven	Wall Oven/ Microwave	Microwave	Appliances
A				
B				
C				
D				
E				
F				
G				
H				
External Profile (tick)	□ Square Arrised			
	□ 2mm			
	□ 3mm			
	□ 6mm			
	□ Soft Bevelled			



ROLLER DOORS	Quantity	Internal Carcass Height	Internal Carcass Width

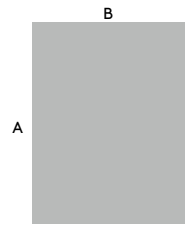
Vertical Panel Edge Treatment: reference for page 4				
Option E1	Option E3	Option E5	Option E7	Option E11
Option E2	Option E4	Option E6	Option E8	<b>NB</b> If a Return or Double-Sided is chosen on Square Back options, edge on back will be arrised.

**Vertical: Pantry Doors and End Panels**

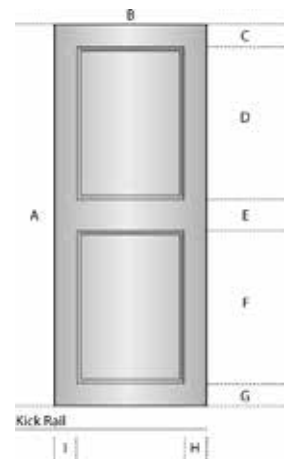
Tall Panel Double Profile		Panel 1 mm	Panel 2 mm	Panel 3 mm	Panel 4 mm	Panel 5 mm	Panel 6 mm
Profile Required		Classic Match to Door	Classic Match to Door	Classic Match to Door	Classic Match to Door	Classic Match to Door	Classic Match to Door
<p>Note: Match to door means match to Door Profile selection on Page 1.</p> <p>For Classic, Soft Bevelled, Newport and Country V disregard C to I</p>	QTY						
	A						
	B						
	C						
	D						
	E						
	F						
	G						
	H						
	I						
Double Sided (Y/N)							
EDGE TREATMENT		Edge Option	Return (Y/N)	Edge Option	Return (Y/N)	Edge Option	Return (Y/N)
Right Edge Option							
Left Edge Option							
Top Edge Option							
Bottom Edge Option							

N.B. Double Sided becomes the default if Return is chosen on more than 2 sides.

Classic panel (Tall or Short)



Routed Double Panel

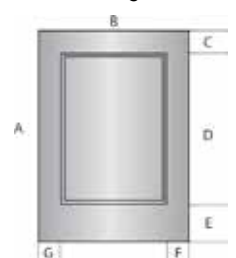


- G will always default to 60mm unless otherwise specified.
- Minimum door rail width is 20mm.
- Return Panel will be painted 100mm on each chosen side.

Tall or Short Panel Single Profile		Panel 1 mm	Panel 2 mm	Panel 3 mm	Panel 4 mm	Panel 5 mm	Panel 6 mm
Profile Required		Classic Match to Door	Classic Match to Door	Classic Match to Door	Classic Match to Door	Classic Match to Door	Classic Match to Door
<p>Note: Match to door means match to Door Profile selection on Page 1.</p> <p>For Classic, Soft Bevelled, Newport and Country V disregard C to I</p>	QTY						
	A						
	B						
	C						
	D						
	E						
	F						
	G						
	H						
	I						
Double Sided (Y/N)							
EDGE TREATMENT		Side(s)	Return (Y/N)	Side(s)	Return (Y/N)	Side(s)	Return (Y/N)
Right Edge Option							
Left Edge Option							
Top Edge Option							
Bottom Edge Option							

N.B. Double Sided becomes the default if Return is chosen on more than 2 sides.

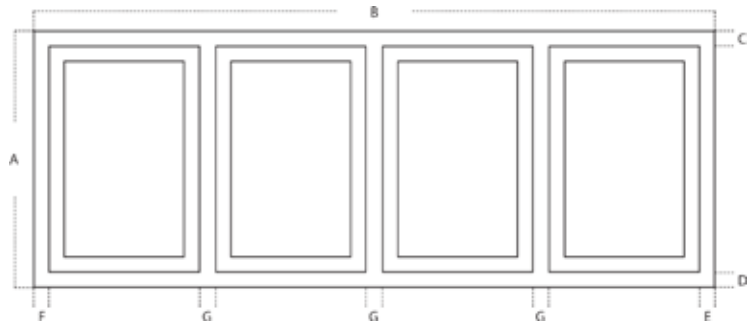
Routed Single Panel



- E will always default to 60mm unless otherwise specified.
- Minimum door rail width is 20mm.

**Barback and Horizontal Panels**

Profiled Panel		Panel 1 mm	Panel 2 mm	Panel 3 mm
Per Panel	QTY			
	No. of Face Patterns			
	A			
	B			
	C			
	D			
	E			
	F			
	G			
	Override Outer Edge	T B L R	T B L R	T B L R
	Square			



Note: Please write dimension requirements in table provided. Be sure to complete measurements A-G. Example drawing of a 4 face pattern shown above. Internal stiles (G dimension) must always be equal. Number of face patterns must be 2 or more. Barbacks with a single face pattern can be entered into the end panel section.

Accessory	Length	Height	QTY
Capping Mould	3600mm		
Recessed Rail 'L' Shape (25mm width)	2400mm		
Kick Rail (Height min 20mm to max 150mm)	1800mm		
Kick Rail (Height min 20mm to max 150mm)	3600mm		
Touch Up Paint	50ml		
Touch Up Paint	1L		

Recessed Rail 'L' Shape

