

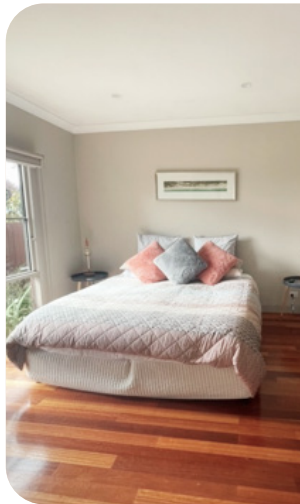


SURROUND
by Laminex™

BUILDER
COLLECTIVE

GET YOUR MEASURING TAPE READY AND CHANNEL YOUR INNER DIY GURU...

It's time to bring your dream bedhead to life that'll have you snoozing in style!!!



1. SIZE UP YOUR SPACE

Creating the perfect nest for your sleepy head.

- Use a tape measure to determine the width, height and thickness of where the bedhead will be installed.



2. DESIGN

Grab a pencil and let your creativity run wild

- Draw the design for your dream bedhead. Sketch out the shape, size and style of your bedhead. Consider the overall aesthetic of your room, as well as the function of the bedhead, when creating your design.



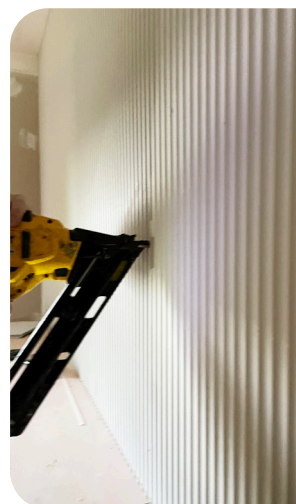
3. MATERIALS

The fun part... Get ready to unleash your inner designer with Laminex - with their vast array of designs, the possibilities are truly endless.

Choose your desired Laminex sheets that match the style of your room.

Calculate how many sheets of Laminex surround required for your bedhead.

Calculate required lengths of timber beams for framework and timber panel for the top shelf.



TOOLS

- Tape measure
- Pencil
- Spirit level
- Stud finder
- Circular saw
- Screws or nails
- Drill, nail gun or hammer
- Construction adhesive (Liquid nails)
- Putty and putty knife
- Sanding sponge
- Paint



4. THE BUILD

Build and install the framework for your bedhead...

- Cut the Laminex sheets to size using a circular saw or jigsaw. Be sure to use a straight edge to ensure clean, straight cuts.
- Remember to leave adequate space for the electrical work within the bedhead for safety and convenience when installing lighting or charging devices.



5. INSTALLATION

Start from the corner and work your way across the wall. Using a spirit level make sure the sheets are accurately positioned. The sheets join together using a tongue and groove system. Do not forcefully hit the sheets together. Repeat the previous steps to complete the installation. Measure area for the final piece of panelling. To finish cut the final panel using your measurements and fit into position.



6. TOP SHELF

Now for the last piece of the puzzle...the top timber panel/shelf is ready to be placed in position. Once you have cut the timber to size, place on top of your panelled framework. Secure with construction adhesive and nails or screws.

Voila!!! ... Your bedhead is now ready to take centre stage!



7. FINAL TOUCHES

To complete your bedhead, use putty to fill in any nail or screw holes.

Allow adequate drying time before you sand and paint.



8. IT'S TIME TO PAINT

Get ready Picasso - with your wall prepped and primed, it's time to paint the town (or at least your bedroom) in the colour of your dreams !!!

